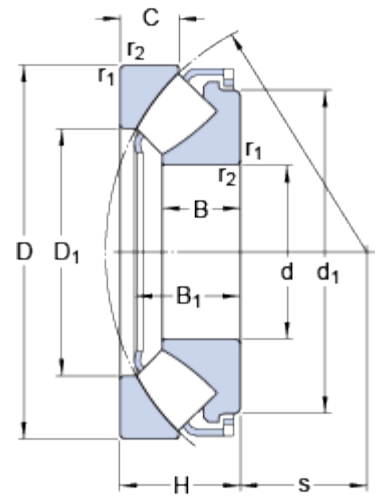


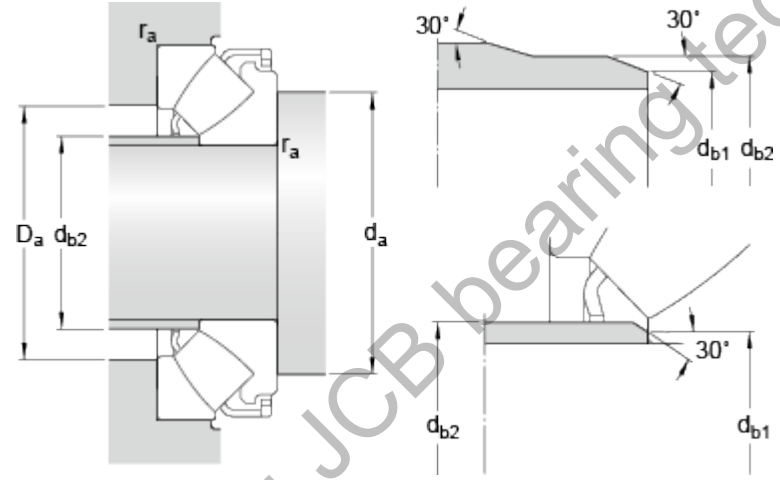
▶
29430

Dimensions



d	150	mm
D	300	mm
H	90	mm
d ₁	≈ 262	mm
D ₁	≈ 208	mm
B	58	mm
B ₁	80.8	mm
C	43.4	mm
s	92	mm
r _{1,2}	min. 4	mm

Abutment dimensions



d _a	min. 220	mm
d _{b1}	max. 163	mm
d _{b2}	max. 175	mm
D _a	max. 253	mm
r _a	max. 3	mm

Calculation data

Basic dynamic load rating	C	1860	kN
Basic static load rating	C ₀	5100	kN
Fatigue load limit	P _u	520	kN
Reference speed		1200	r/min
Limiting speed		2200	r/min
Minimum axial load factor	A	2.5	

Mass

Mass bearing		28	kg
--------------	--	----	----